

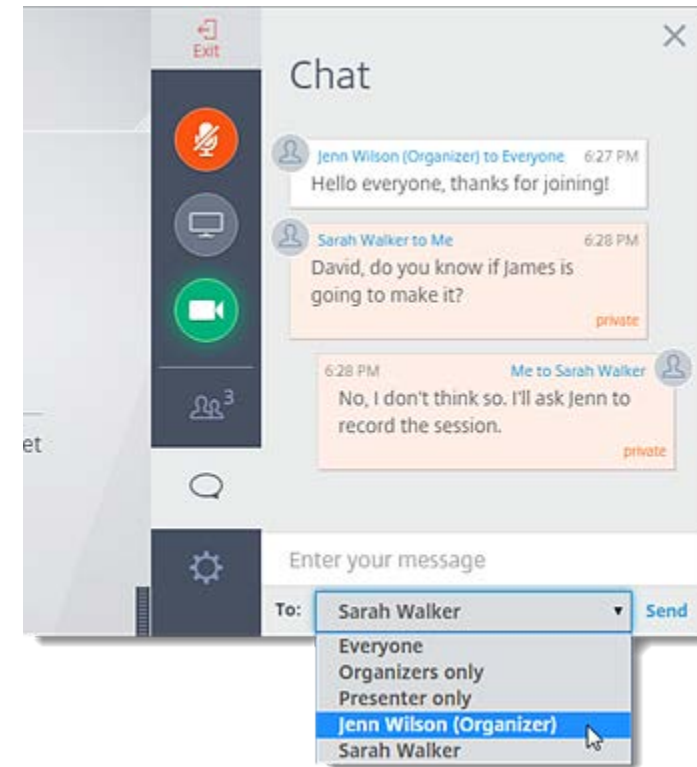


# Industry Advisory Committee

LAW AND PUBLIC SERVICE  
AUGUST 23, 2018  
1:30-2:30P.M. CDT

# GoToWebinar Functionality

- Toolbar with orange arrow to expand or collapse
- Muting your microphone
- Raise your hand feature
- Chat and question box – drop down menu to respond to presenter or entire group



# August Webinar Agenda

1. Committee Member Introductions
2. Roles and Responsibilities
3. Timeline
4. Programs of Study

# Industry Advisory Committee Introductions

Name	Company/Organization	Email
Annette Gregory	Former Austin ISD CTE Director	<a href="mailto:akgregory@aol.com">akgregory@aol.com</a>
Barry Bacom	Former Manor ISD CTE Director; now administrator at Luling ISD	<a href="mailto:barry.bacom@lockhart.txed.net">barry.bacom@lockhart.txed.net</a>
Cathy DeWitt	The Schlueter Group	<a href="mailto:cat.dewitt2@gmail.com">cat.dewitt2@gmail.com</a>
Cesar Garcia	PSJA ISD	<a href="mailto:cesar.garcia@psjaisd.us">cesar.garcia@psjaisd.us</a>
Christine Ramirez	TAMU Engineering Extension Service Texas	<a href="mailto:Christine.Ramirez@teex.tamu.edu">Christine.Ramirez@teex.tamu.edu</a>
Corina Zepeda	Boy Scouts Capitol Area	<a href="mailto:corina.zepeda@scouting.org">corina.zepeda@scouting.org</a>
Dave Raushenberger	TAMU Engineering Extension Service Texas	<a href="mailto:Dave.Raushenberger@teex.tamu.edu">Dave.Raushenberger@teex.tamu.edu</a>
Emily Clodfelter	Texas Workforce Commission	<a href="mailto:emily.clodfelter@twc.state.tx.us">emily.clodfelter@twc.state.tx.us</a>
Javier Castro	San Marcos ISD	<a href="mailto:javier.castro@smcisd.net">javier.castro@smcisd.net</a>
Jeff Spivey	Irving Chief of Police	<a href="mailto:jspivey@cityofirving.org">jspivey@cityofirving.org</a>

# Industry Advisory Committee Introductions

Name	Company/Organization	Email
Jessica Herrera	Director of Economic Development City of El Paso	<a href="mailto:herrerajl@elpasotexas.gov">herrerajl@elpasotexas.gov</a>
Joe Gordy	Graham ISD	<a href="mailto:joe.gordy@grahamisd.com">joe.gordy@grahamisd.com</a>
Justin Harper	Grand Prairie	<a href="mailto:justin.harper@gpisd.org">justin.harper@gpisd.org</a>
Lauren Anzalone	Acadian Inc.	<a href="mailto:lauren.anzalone@acadian.com">lauren.anzalone@acadian.com</a>
Matt Giani	UT Austin	<a href="mailto:matt.giani@austin.utexas.edu">matt.giani@austin.utexas.edu</a>
Rebecca Solis	Customs and Border Patrol	<a href="mailto:Rebecca.solis@cbp.dhs.gov">Rebecca.solis@cbp.dhs.gov</a>
Susan Kiser	Federal Reserve Bank of Dallas-Houston Branch	<a href="mailto:susan.kizer@dallfrb.org">susan.kizer@dallfrb.org</a>
Tim Rutland	Texas Commission on Fire Protection	<a href="mailto:tim.rutland@tcfp.texas.gov">tim.rutland@tcfp.texas.gov</a>
Travis Waddell	ESC 10	<a href="mailto:travis.waddell@region10.org">travis.waddell@region10.org</a>

# Meeting Norms

- Being student focused
- Circle of trust
- Assume positive intent
- Speak freely
- Balance urgency with patience
- Monitor your airtime

# Roles and Responsibilities

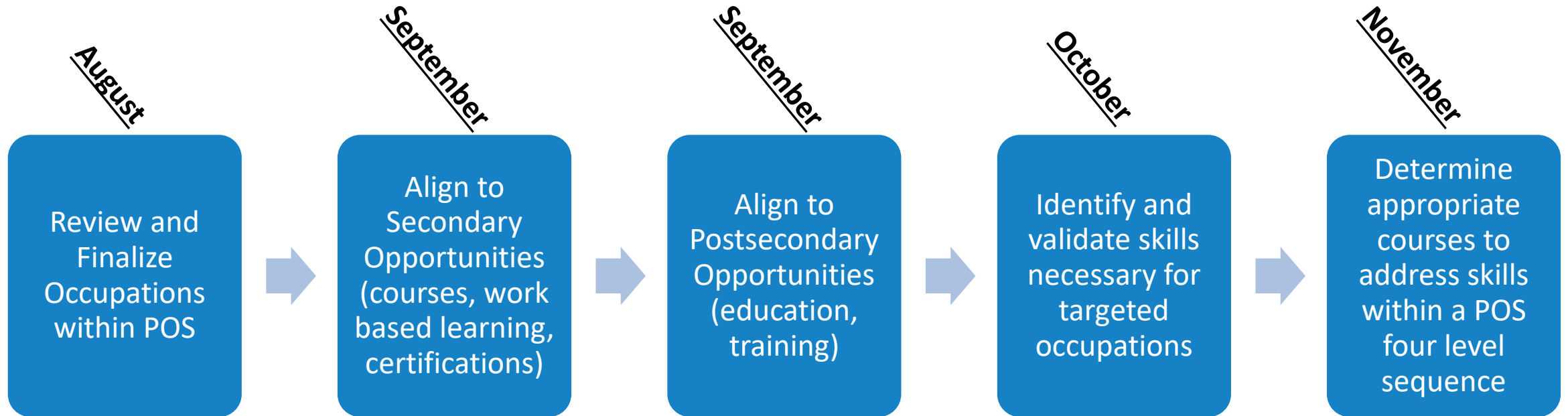
## Committee Members

- Review occupations and skills related to Programs of Study
- Determine alignment of skills, secondary opportunities, and postsecondary opportunities
- Create course sequencing options for implementation of Programs of Study

## TEA Staff

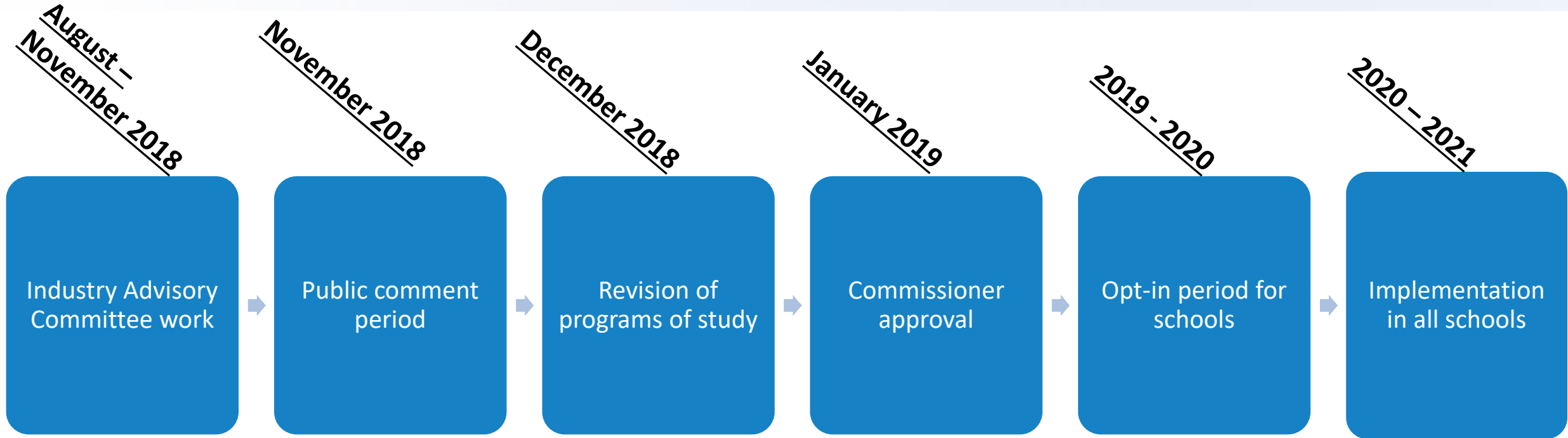
- Collection of labor market data
- Identify proposed Programs of Study from labor market data
- Utilize committee input to define Programs of Study
- Communicate information regarding Programs of Study to the field

# Committee Timeline





# Project Timeline



# Program of Study Methodology Data

## EMSI\*

## Labor Market Information Expert

18B data points from dozens of government data sources, updated quarterly.

Hundreds of millions of online job openings

>100M million U.S. individuals' employment and education profiles

Over 40M individual compensation observations

Custom Crosswalks

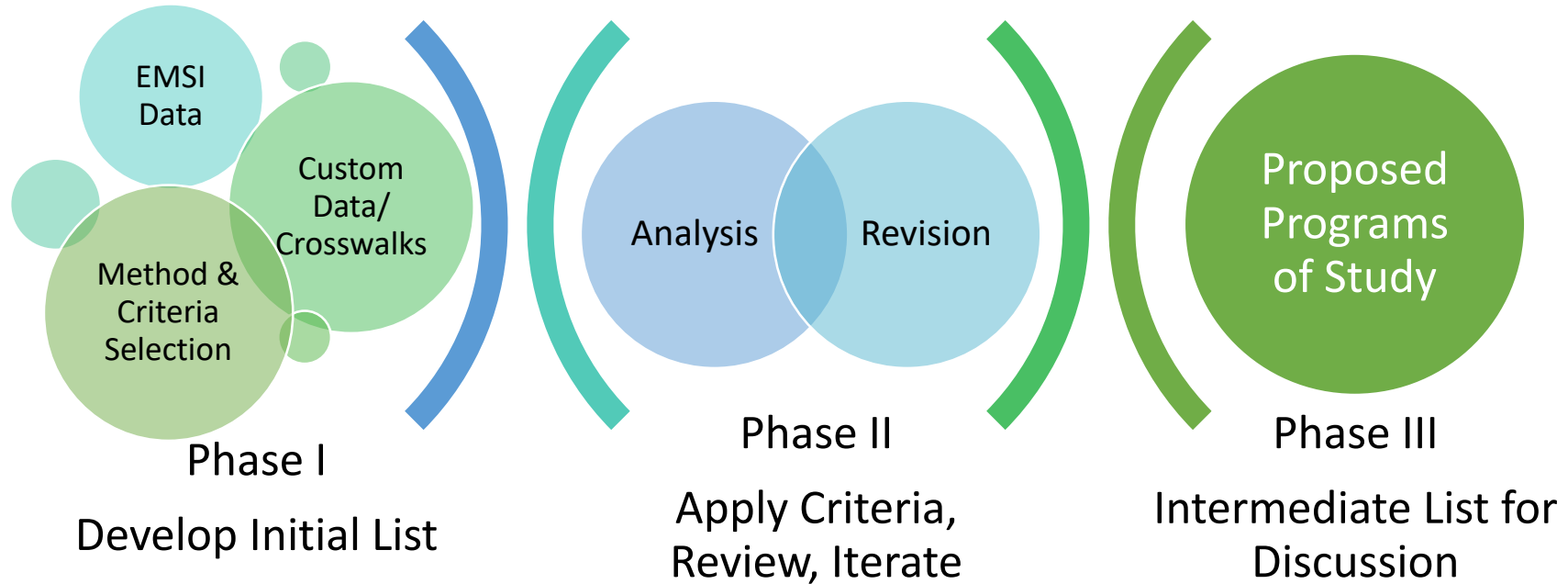
Methodology Analysis and Recommendation

Texas postsecondary (IPEDS) completers

Texas LWDA Data

\* EMSI information can be found at: <https://www.economicmodeling.com/data/>

# Program of Study Methodology Overview



**Job Growth: 17%   Median Salary: \$35,339   Annual Openings: 500**

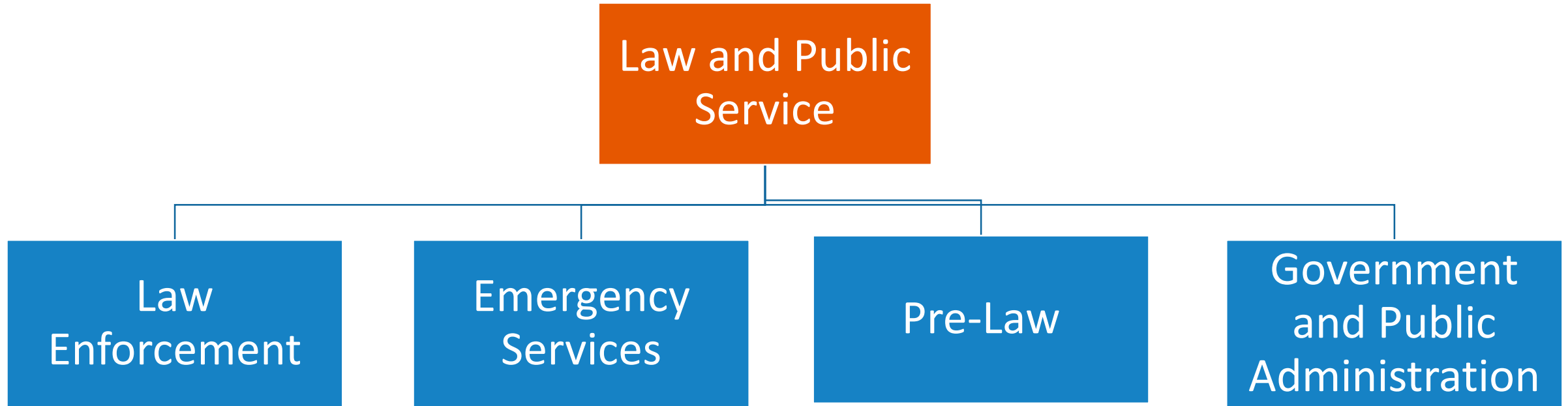
# What is a Program of Study?

## **A Program of Study should include:**

- A sequence of non-duplicative secondary courses supporting a defined area of careers and embedding academic and technical content
- High-school work-based learning
- Industry Based Certifications needed to obtain careers
- Postsecondary education and training opportunities tied to career entry points
- Multiple education and training exit points along the career progression

New programs of study are essential for meeting federal requirements for Perkins and ensuring CTE concentrators are prepared to earn a valued credential.

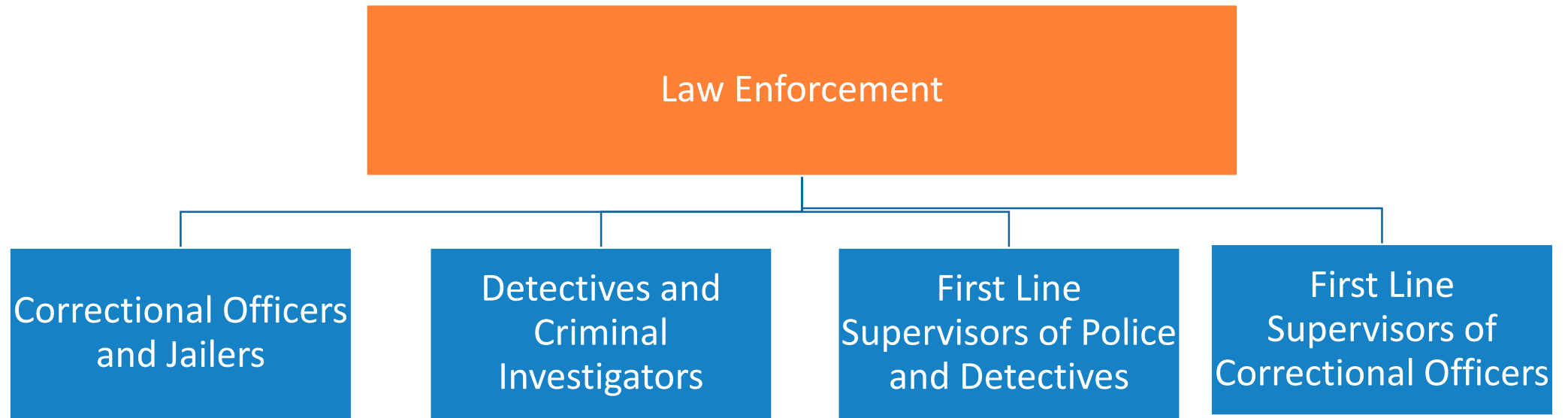
# Programs of Study Overview



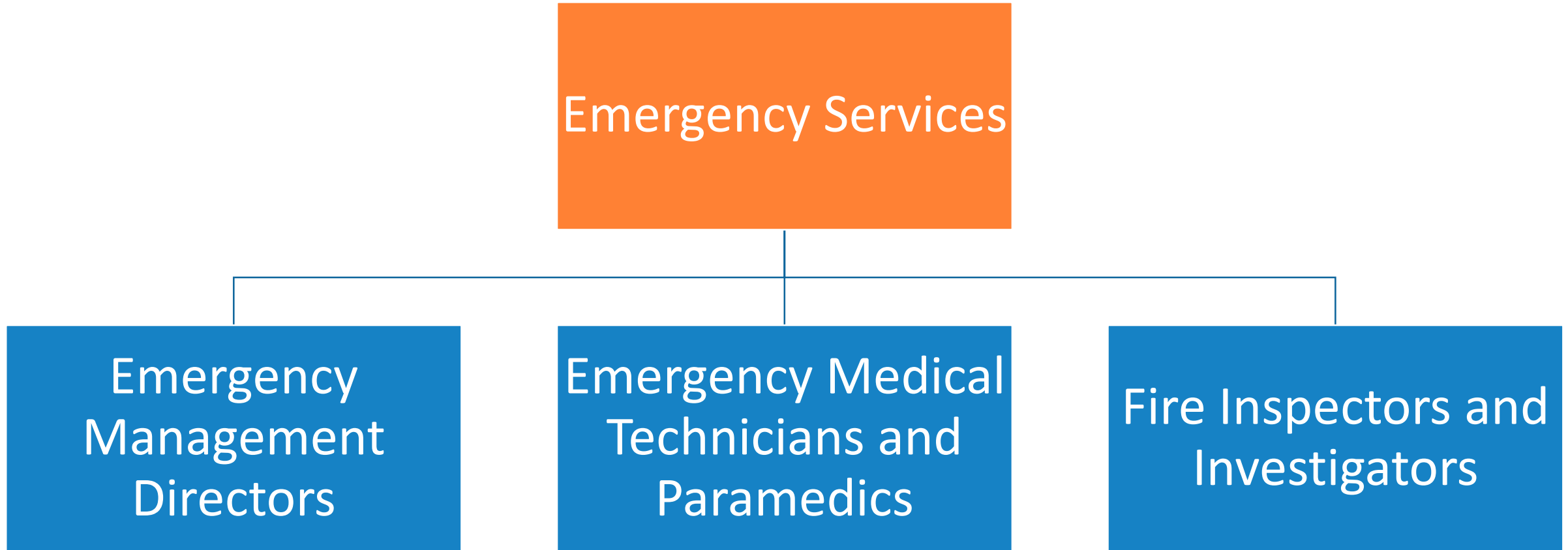
# Programs of Study & Occupations



# Programs of Study & Occupations

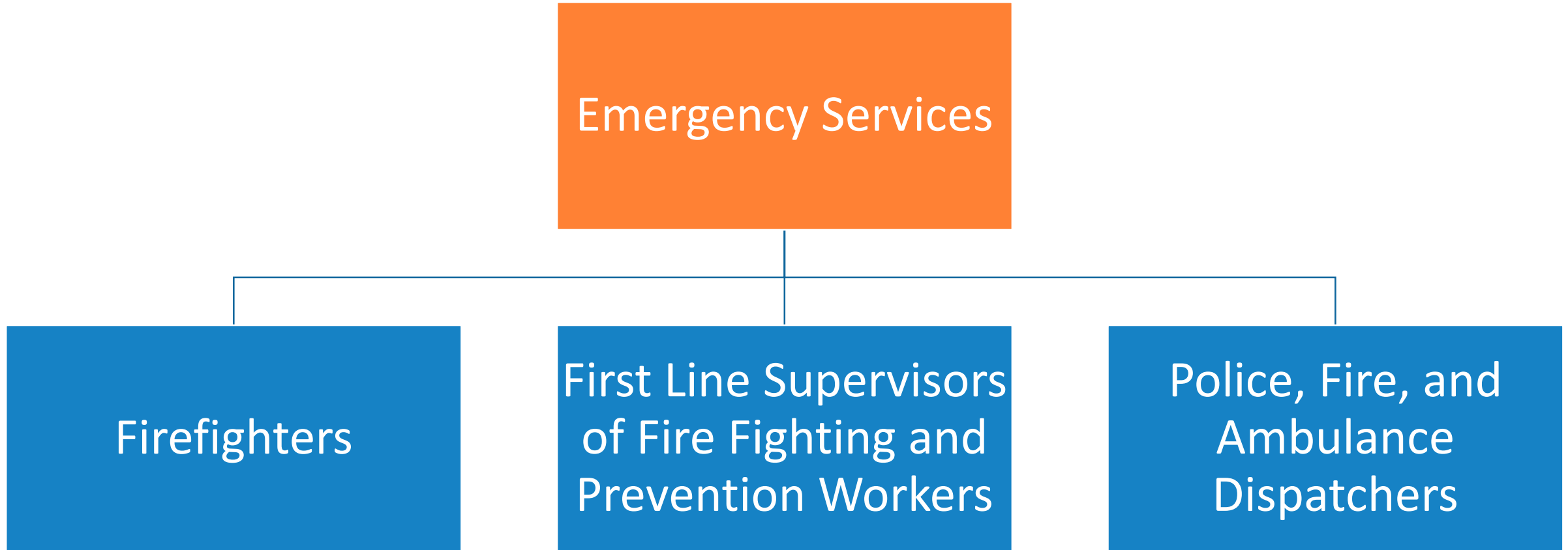


# Programs of Study & Occupations

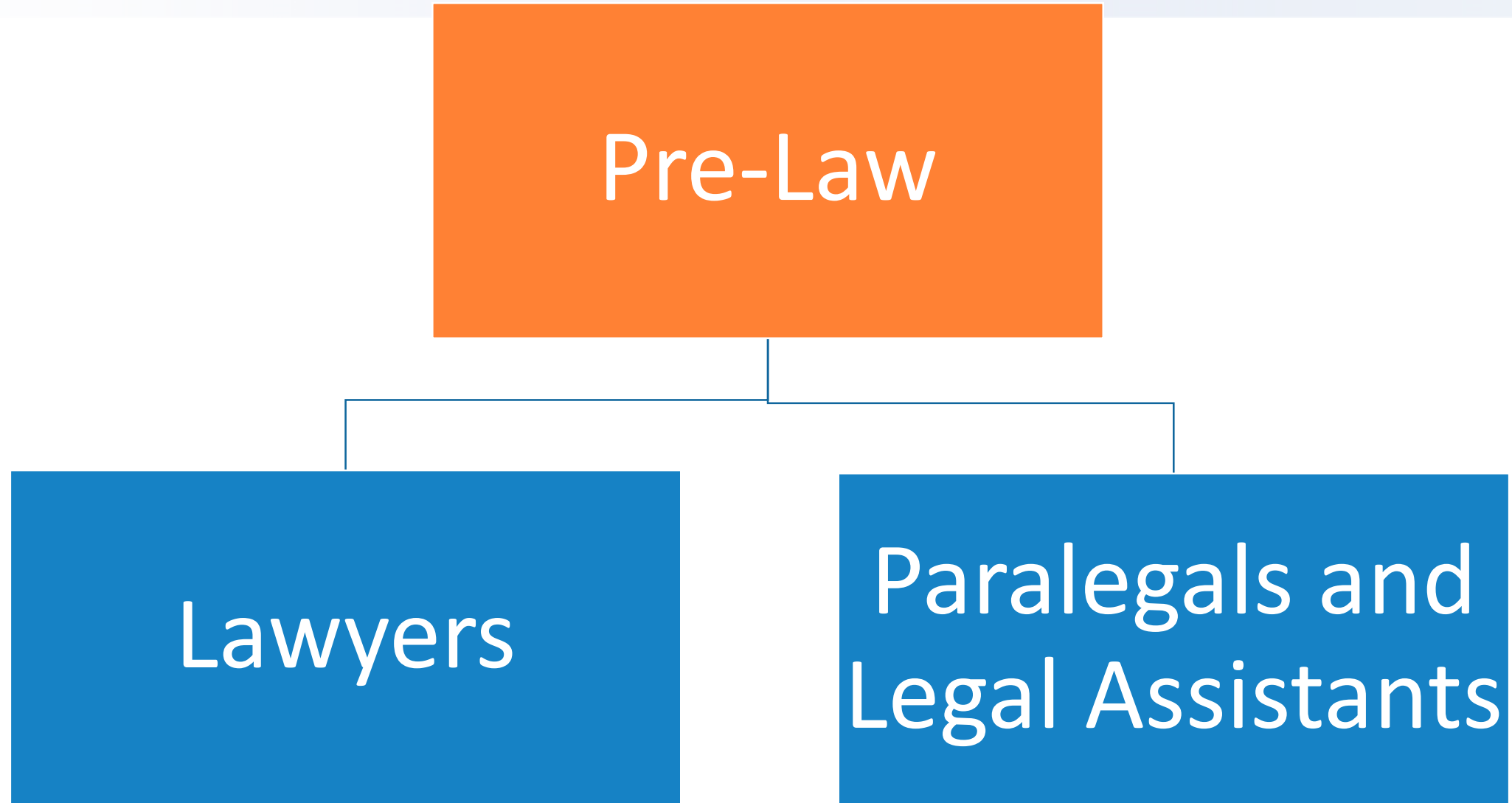




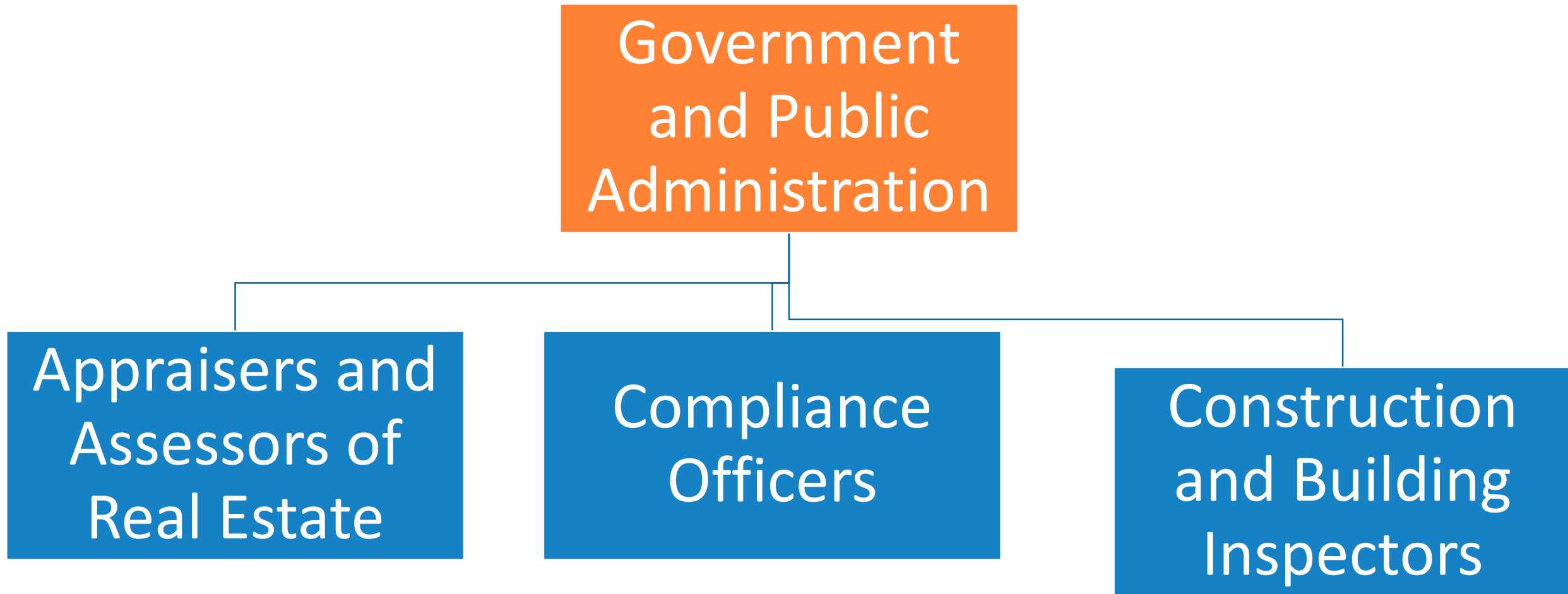
# Programs of Study & Occupations



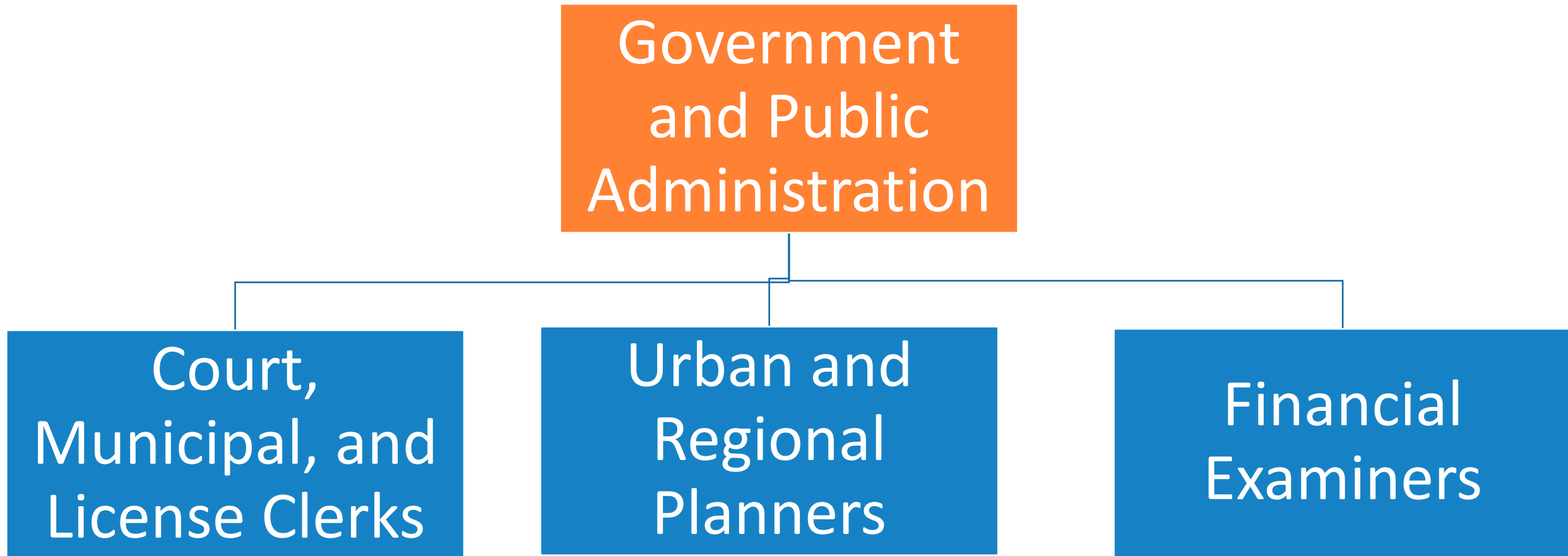
# Programs of Study & Occupations



# Programs of Study & Occupations



# Programs of Study & Occupations



# Next Steps

- **Postsecondary programs:**

Opportunities for students to continue their education and training beyond high school. This includes Level I and II certificates, apprenticeships, associate, and bachelor's degree programs.
- **Work based learning:**

Work-based learning is a continuum of intentional activities and experiences designed to expand the boundaries of the classroom and prepare students for future career opportunities.
- **Work-based learning provides opportunities for students to:**
  - apply knowledge learned in the classroom;
  - explore potential career options;
  - engage with business and industry practitioners; and
  - develop essential 21st century skills.

## Next Steps

- Review revisions to programs of study
- Prepare for Job Profile validation
- Web meeting: September 27, 2018 at 1:30 pm CDT
- In-person meeting: November 9, 2018 in Austin (details forthcoming)
- Exit Ticket:

[https://tea.co1.qualtrics.com/jfe/form/SV\\_85EJ9pepzfdL6IZ](https://tea.co1.qualtrics.com/jfe/form/SV_85EJ9pepzfdL6IZ)

- Follow up request

[https://tea.co1.qualtrics.com/jfe/form/SV\\_bNuJhJd3IMZQuPP](https://tea.co1.qualtrics.com/jfe/form/SV_bNuJhJd3IMZQuPP)

For more information, please contact:

Dale Fowler

[Dale.fowler@tea.texas.gov](mailto:Dale.fowler@tea.texas.gov)

512-463-3282

Ryan Merritt, Statewide CTE Director

[Ryan.Merritt@tea.texas.gov](mailto:Ryan.Merritt@tea.texas.gov)